

IN THE MOMENT



Sundance® Spas

Spending time
with the people
you love

It's one of the best feelings
in the world. As you sink
into the soothing waters of
a Sundance® spa, everything
melts away, leaving only an
exceptional moment.

We call it the Sundance® hug.





MOMENTS Playful



Your place for sharing good times, anytime.

MOMENTS

Unforgettable



Experiences you'll talk about for years.





MOMENTS Peaceful



A space to relax and reset.

MOMENTS Enduring

For 45 years, we've been
at the forefront of crafting
exceptional products,
designed to help create
meaningful connections.

Where family and friends gather for decades.



Sundance® makes it so easy to enjoy more feel-good moments in your spa. Pushing the boundaries in jet technology to deliver amazing hydromassage, simplifying clear water, and combining beautiful design with solid craftsmanship—all part of the Sundance® legacy.

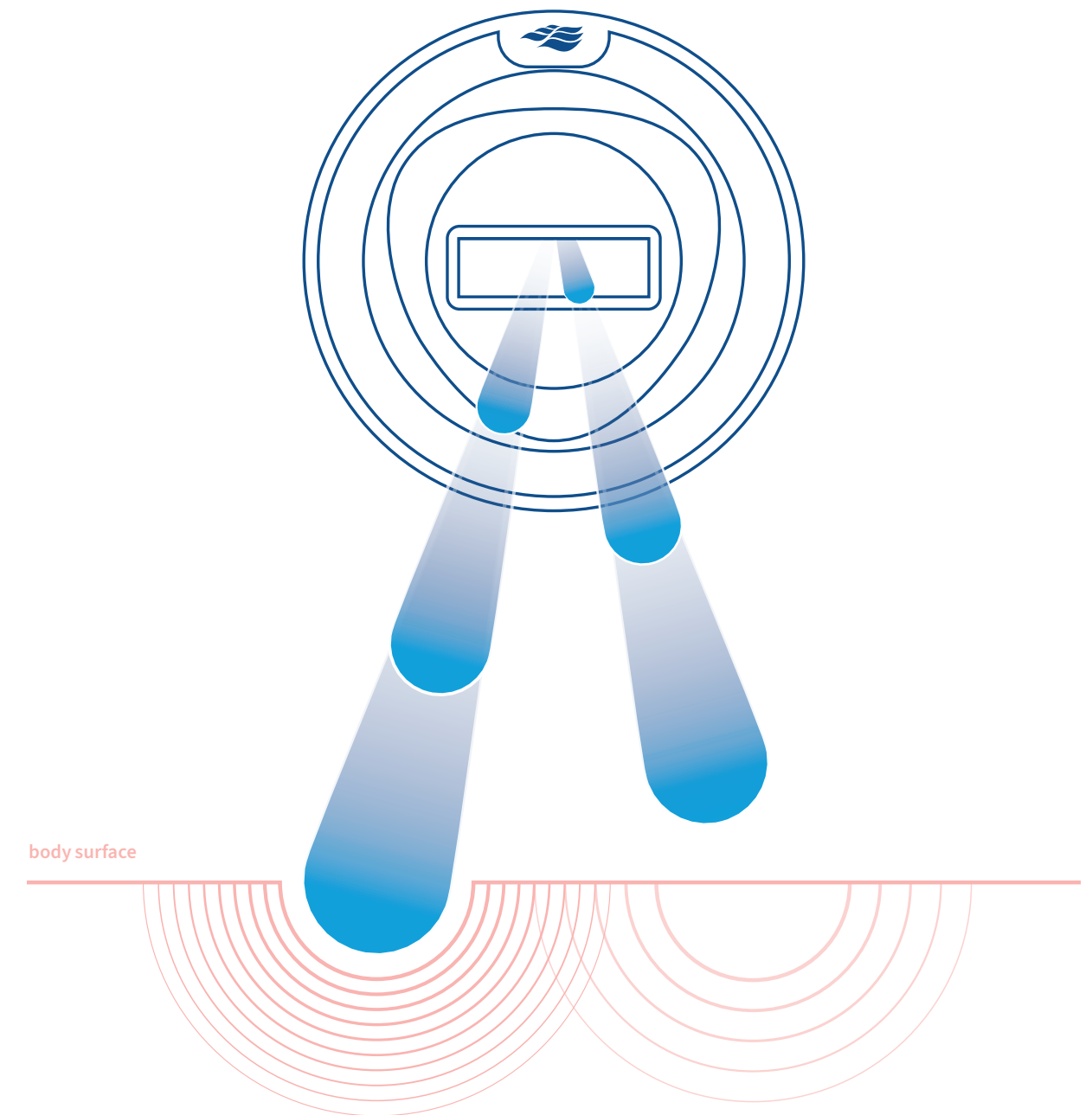
FEEL THE
Sundance®
difference...

FLUIDIX® Technology behind it all

Developed with the global leader in fluid dynamics, patented Fluidix® technology manipulates air and water to create unique massage actions. With no internal moving parts or bearings, Fluidix® Jets won't clog or wear out.

Our brand-new Fluidix® PT™ Jets alternate powerful, percussive streams of water to give you a deep-tissue massage to relieve muscle tension. Available exclusively on the newly redesigned 880™ Series.

A new era in jet technology.



Percussive Therapy
Stimulates back-and-forth “punches” of air and water that mimic the action of a massage gun.

Rotation and Direction
Easily rotate the jet face a full 360 degrees to pinpoint specific muscles in the back for a completely personalized massage.

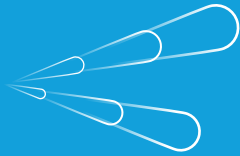
VERSATILITY

Your ideal hydromassage

All Sundance® spas deliver a variety of distinctly satisfying hydromassage types, powered by precision-engineered jets and patented technologies.

Maximum performance and versatility.

Percussive Therapy
New! Introducing percussive streams of water that rapidly alternate for an invigorating, deep-tissue, adjustable massage.



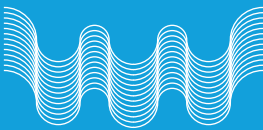
Relaxtion
An air-only soft-tissue massage mimics the subtle touch of fingers rubbing and patting the body.



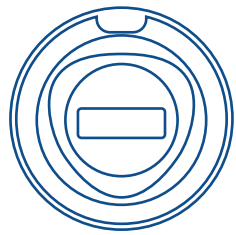
Muscle Release
Unique motion creates the sensation of fingers and thumbs firmly working into your muscles, increasing circulation and promoting overall relaxation.



Deep-Tissue
Powerful water streams simulate strong hands deeply kneading large muscle groups to reduce tension and discomfort.



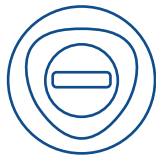
Pressure Point
Focused streams imitate firm fingers activating vital acupressure points to release strain and stimulate the body's energy.



Fluidix® PT™ Jet
Percussive streams alternate for a deep-tissue massage; jet face adjusts 360 degrees.



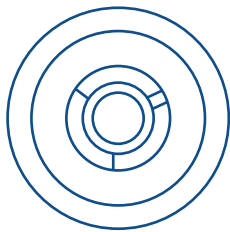
Silent Air® Injector Jet
A small, gentle stream of bubbles also diffuses SunScents™ Aromatherapy.



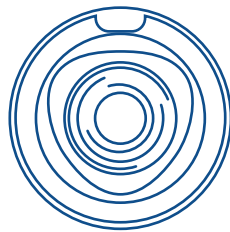
Fluidix® Reflex™ Jet
Adjustable, back-and-forth Swedish-style massage for circulation and relaxation.



Fluidix® Nex™ Jet
Adjusts to relieve neck tension and strain in small muscles.



Whirlpool Jet
Vigorous, deep-tissue massage that is adjustable.



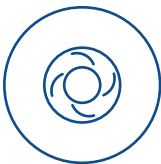
Vortex Jet™
Adjustable rifling action creates a swirling high-and-low impact.



Fluidix® Intelli-Jet™
Adjustable water flow oscillates for a deep-tissue massage.



Fluidix® ST™ Jet
Focused, deep-tissue jet stream adjustable for intensity and pressure.



Mini Vortex Jet™
High/low-impact targeted stream with rifling action, also adjustable.



Accu-Pressure™ Jet
Deep-tissue massage to relieve muscle tension and joint pain.



Focus Relief® Jet
Bubbles create a deep-tissue massage or effervescence for soft tissue.



SMT™ Micro Jet
Small, targeted massage to ease neck tension.



Adjustable Accu-Pressure™ Jet
Deep-tissue massage action that you control.



EXPERIENCES Designed with you in mind

Each of our ergonomically designed seats offers a unique massage experience, with jets precisely placed to target different muscle groups. Choose the perfect seat and relax, as the warm water embraces you.



Accu-Sage™

Designed to stimulate vital acupressure points, releasing strain and alleviating discomfort.



Sports

Configured specifically to relieve tension and reduce muscle soreness in the neck, shoulders, and back.



Swedish

Creates a deeply relaxing sensation with its distinctive kneading motion.



Full Body

Combines Swedish massage with a soft-tissue massage in the legs to soothe the lower body.



Percussive

Focuses rapidly alternating streams of water deep into the back to relieve tension.



Deep-Tissue

Applies slow, broad strokes and firm pressure to reach the deepest muscle layers.

MICROCLEAN®

Filtered water

Every Sundance® spa comes with a best-in-class MicroClean® filtration system that works to ensure the water is always ready when you are.

Step into sparkling water.

Slipstream™ Skimmer

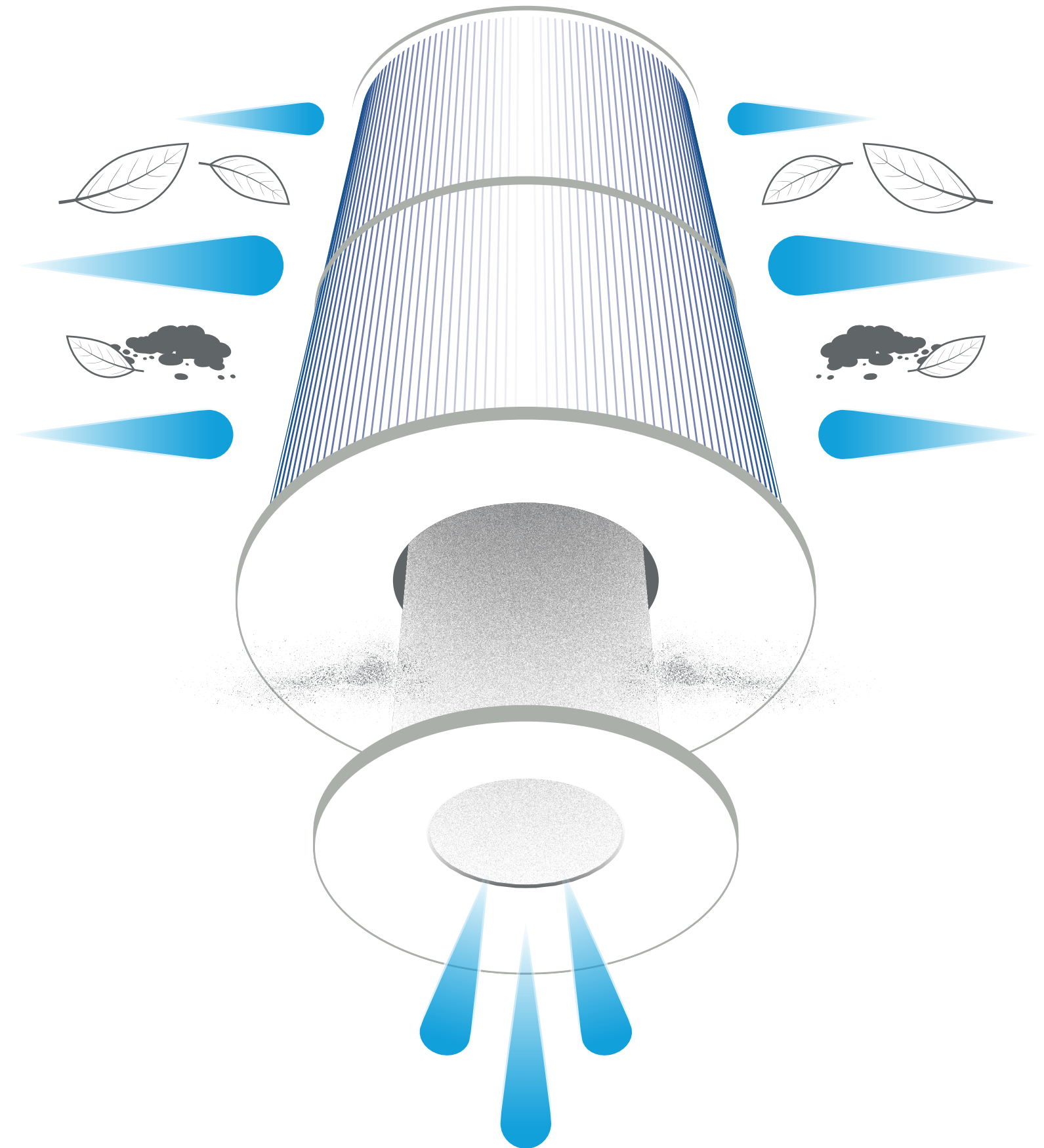
The extra-wide weir gate floats along with the water level to “skim” more debris than standard systems and prevent buildup.

Proprietary horizontal filter

Unlike a typical vertical filter, the horizontal position of our pleated filter allows water to flow through the filter.

Interior filter

At the heart of the system is an ultra-filtration core liner that removes even the tiniest of unwanted particles.

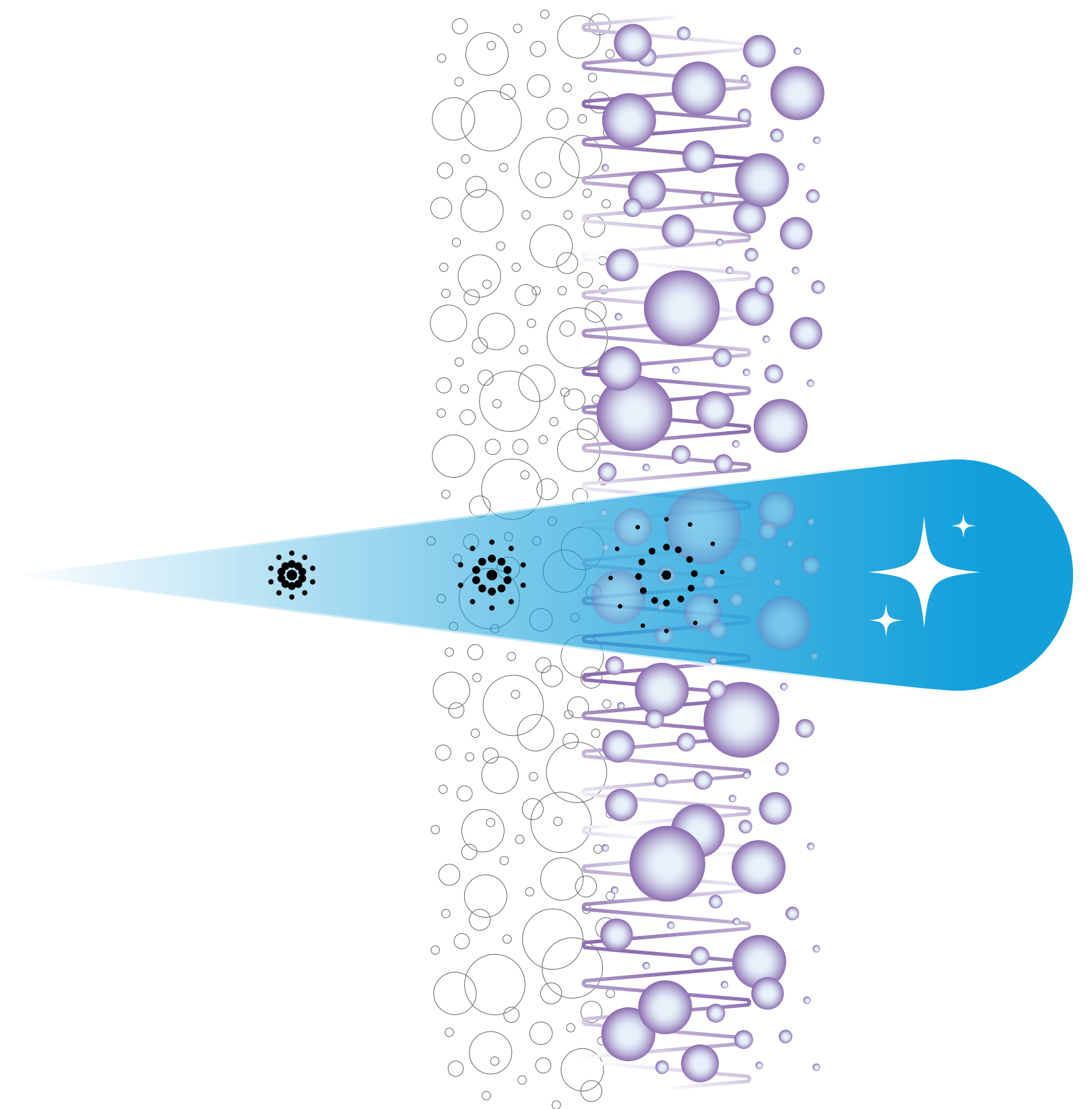


CLEARRAY® Clean* Water, simplified

The ClearRay Active Oxygen® System combines ozone and UV-C to unlock powerful active oxygen molecules for a hands-free approach to water care. It works harder and cleans* the water longer.

Keeping it simple and effective.

*Clean is defined as the removal of microscopic (down to 3-micron level, varies by model) debris from the water. The ClearRay Active Oxygen® System utilizes various technologies to achieve cleanliness. One of them is ozone, which aids in the grouping of smaller debris to form larger clusters that can be more easily captured in the filtration process.



Filtered Water
The MicroClean® Filter converts water passing over the weir gate into filtered water.

Ozone
The system injects a small amount of ozone into the filtered water.

UV-C
The UV-C light unlocks active oxygen molecules from the ozone.

Active Oxygen
The active oxygen molecules clean* the water, so your spa is ready to enjoy anytime.



📍 Working Properly
📍 Reminder
📍 Needs Attention

CONTROL Peace of mind

Our patented, industry-first SmartTub® system provides remote monitoring and control through phones, smart devices, Siri®, Alexa®, and Google Assistant® wearables anywhere in the world.* All with software updates and a cellular connection that's simpler and more reliable than Wi-Fi.

Enjoyment made easy.

Convenience

Track energy usage reports, pair with smart devices, and enjoy new features, which are updated automatically.

Full Control

Adjust temperature, jets, and lights, and lock down your hot tub to prevent usage, whether home or away.

Peace of Mind

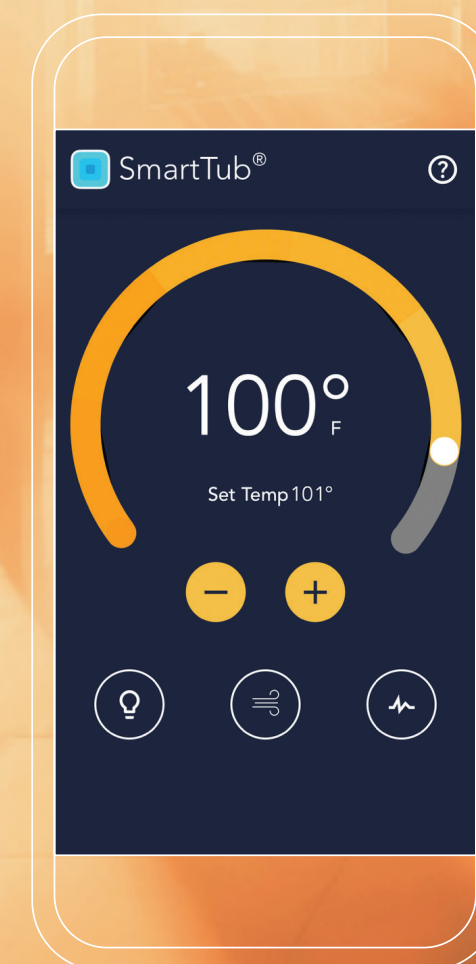
Smart sensors send automatic alerts to you and your dealer if your hot tub needs attention, for power outages, freezing, overheating, etc. It also sends maintenance reminders, to make your life easier and keep your spa running optimally for years.

Energy Savings

Smart technology lets you optimize energy savings with industry-first Smart Heat Mode, which monitors, schedules, and adjusts energy usage. Automation reduces standby power by 25%.

Actual SmartTub® owner's review

“I keep the temp about 96° when I’m out of town and just click the app on the way from the airport and ... *voila!* It’s 101° when I get home.”



*Siri, Alexa, and Google Assistant are trademarks and registered trademarks of their respective owners.

CRAFTED

Enduring quality

From innovative features, progressive technologies, and iconic designs to the smallest details and finishing touches, there's enduring quality in every aspect of a Sundance® spa.

Generations of joy start here.

Rigid Bond™ Shell
Our proprietary shell manufacturing process strengthens the acrylic and increases its ability to retain heat.

Efficient Heater
The premium titanium element* transfers heat to the water with thermal efficiency.

SunStrong® Cover
Our lightweight cover fits properly to protect your spa from heat loss and debris.

Cabinetry
Our proprietary UV-resistant cabinetry is both durable and low-maintenance.

Full Insulation
Reduces the energy required to run your spa while offering protection from air, moisture, and sound.

Tool-free Access
Reach critical spa components, including the drain, without tools, to save time and simplify maintenance.

Synthetic Base
Provides a solid foundation that's impervious to moisture and other natural elements.

*Depending on model.

INNOVATION

For over four decades

Sundance® has a reputation for innovation and a history of industry firsts. Others try to imitate, but no other company can match the Sundance® brand when it comes to delivering a phenomenal spa experience.

We're just getting started.

The Sundance History of Industry Firsts

<div>1979</div> <div>Sundance® Spas opened the first manufacturing facility in Costa Mesa, California</div> <div>SEE PAGE 17</div>	<div>1991</div> <div>Made the Accu-Ssage™ Therapy Seat standard on all models</div> <div>SEE PAGE 17</div>	<div>2003</div> <div>Launched Fluidix® Intelli-Jet™</div> <div>SEE PAGE 15</div>
<div>1980</div> <div>Was the first to incorporate recessed jets</div>	<div>1992</div> <div>Integrated SunScents™ Aroma-therapy Dispensing System</div>	<div>2005</div> <div>Rolled out Dynamic Flow™ Circulation Pump. Moves water 5x faster with less energy</div>
<div>1984</div> <div>Applied electronic technology to spa control systems</div>	<div>1993</div> <div>Developed Electronic Topside pH and ORP Monitoring System</div>	<div>2012</div> <div>Added ClearRay® System, the first in-line UV, standard on all models</div>
<div>1985</div> <div>Launched Whirlpool Therapy Jet</div>	<div>1995</div> <div>Introduced Exclusive Intelli-Jet™ Variable/Adjustable Hydro Jets</div>	<div>2018</div> <div>Developed SmartTub® System, the only cellular controlled spa</div> <div>SEE PAGE 22</div>
<div>1986</div> <div>Introduced Silent Air® Injector System and Slipstream™ Skimmer</div>	<div>1999</div> <div>Premiered ISO-Pure Salt Water Management System</div>	<div>2020</div> <div>Innovated ClearRay Active Oxygen® System</div>
<div>1987</div> <div>Rolled out built-in assist bars</div>	<div>2001</div> <div>Introduced patented Fluidix® Jets with water & air fluid dynamics</div> <div>SEE PAGE 12</div>	<div>2024</div> <div>Launched Fluidix® PT™ Jet with percussive therapy and wireless charger</div>
<div>1988</div> <div>Constructed Rigid Bond™ Shell</div>	<div>2002</div> <div>Integrated MicroClean® Water Filtration System</div> <div>SEE PAGE 18</div>	<div>Beyond</div> <div>At Sundance®, innovation is an ongoing work in progress</div>



Consider the variety of designs,
features, seating, and size options,
and choose your favorite model.

FIND THE
Sundance[®]

980[™] 880[™] 780[™] 680[™]

Spa

that's
right
for you



980™ Series

Make a bold statement with a superbly crafted spa, rich with features that are ideal for entertaining or simply relaxing.

980

980™ Features

- Experience Patented Fluidix® Jets and up to 10 Massage Varieties
- Specialty Silent Air® Injector Jets
- Focus Relief® Jets
- Upgraded Accu-Ssage™ Therapy Seat
- Spacious Seats with LED Lighting
- SunScents™ Aromatherapy. Scents Sold Separately
- Glass Touch Control for Easy Use, Day or Night
- SmartTub® System
- Integrated BLUEWAVE® Stereo

- Clean® Water Dynamic Flow™ Circulation Pump
- Slipstream™ Skimmer
- MicroClean® Ultra Filtration System
- ClearRay Active Oxygen® System
- ClearRay® On-Demand

- Craftsmanship Robust Synthetic Base
- 3-Layer RigidBond® Shell
- SunStrong® Extreme Cover
- Geometric Exterior Cabinetry
- Tool-Free Cabinetry
- Exterior Lighting
- Low Profile for Easy Entry and Exit
- Lounge Deck with SunCooler™ Cold Storage Areas

- Options EcoWrap® insulation

*Clean is defined as the removal of microscopic (down to 3-micron level, varies by model) debris from the water.

The ClearRay Active Oxygen® System utilizes various technologies to achieve cleanliness. One of them is ozone, which aids in the grouping of smaller debris to form larger clusters that can be more easily captured in the filtration process.



Insulated Storage Cooler
Integrated into the lounge deck, the SunCooler™ cold storage area puts your beverages within easy reach.

Interior Lighting
LED strip lights add ambience by illuminating each of the spacious seats, and make it safer and easier to enter and exit your spa.

Lounge Deck
The beautiful lounge deck provides more room to sit and socialize with the special people in your life.

Geometric Cabinetry
The stylish, visually appealing exterior cabinetry has architectural corner lighting that emphasizes key design elements.

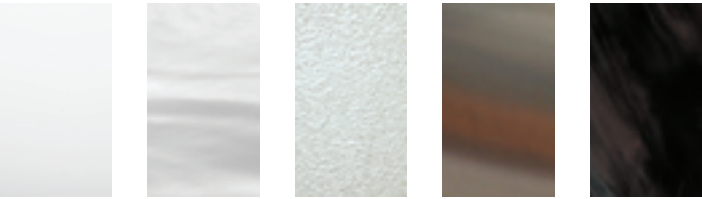
Kingston™
7'8"x8'4"x2'10" ft / 234x254x86 cm



Claremont®
7'8"x8'4"x2'10" ft / 234x254x86 cm

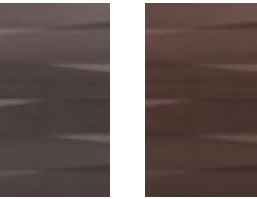


Acrylic



Porcelain Platinum Celestite Monaco Midnight

Cabinetry



Coastal Mahogany

*See manual for more configurations. Specifications may vary by country, please check with your local retailer.



880™ Series

We reimagined our all-time best-selling spas with even more amazing features and an ideal hydrotherapy experience. The result: a completely new best-of-everything family gathering place.

880

SunSide™ Cabinetry
Industry-leading SunSide™ cabinetry seamlessly integrates exterior lighting to create the perfect mood.



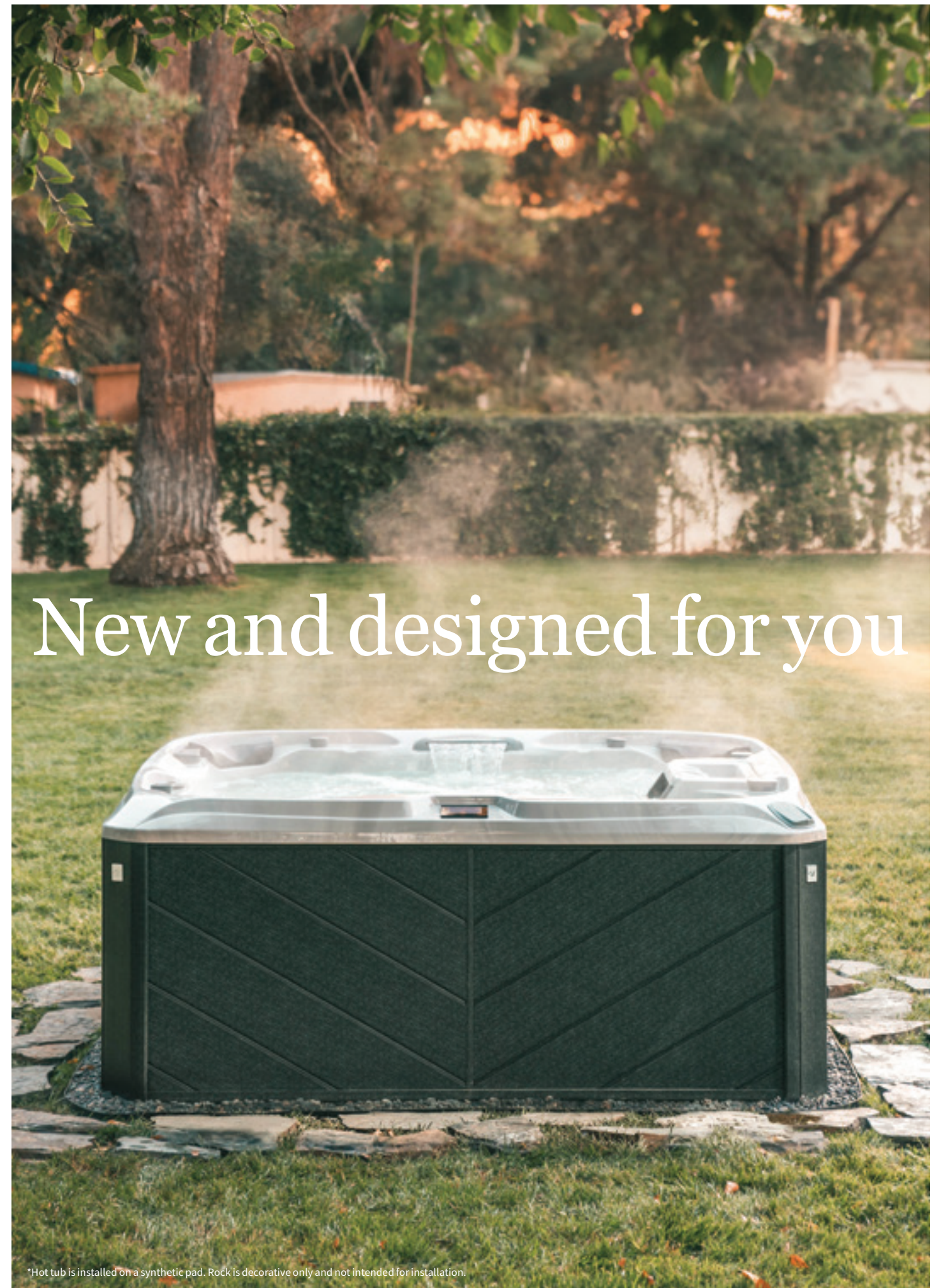
SunStrong® Frame
Our galvanized steel frame offers the security of enduring strength, quality, and performance. It's also 100% recyclable.



Fluidix® PT™ Jet
Percussive streams of water alternate to deliver a deep-tissue massage. Target any area of the back by adjusting the jet faces within a full 360-degree range.



Entertainment Package
Set the mood with music from the new stereo system. Two premium 5-inch speakers and an 8-inch subwoofer provide superior sound quality, while the wireless inductive phone charger lets you remove call and text distractions for a totally immersive experience.



*Hot tub is installed on a synthetic pad. Rock is decorative only and not intended for installation.

880™ Features

- Experience
- Patented Fluidix® Jets and up to 10 Massage Varieties
- Specialty Silent Air® Injector Jets
- Accu-Ssage™ Therapy Seat
- Focus Relief® Jets
- Touch Control with Color Screen
- SunScents™ Aromatherapy. Scents Sold Separately
- Clean* Water
- Dynamic Flow™ Circulation Pump
- Slipstream™ Skimmer
- MicroClean® Ultra Filtration System
- ClearRay Active Oxygen® System
- ClearRay® On-Demand
- Craftsmanship
- SunStrong® Frame
- Robust Synthetic Base
- 3-Layer RigidBond® Shell
- SunStrong® Cover
- SunSide® Cabinetry
- Tool-Free Cabinetry
- Exterior Lighting
- Dual-Purpose Beverage Concierge Filter Lid
- Illuminated Grab Bars
- Options
- Entertainment Package with Stereo and Wireless Charger
- EcoWrap® Insulation
- SmartTub® System
- SunStrong® Extreme Cover



*Clean is defined as the removal of microscopic (down to 3-micron level, varies by model) debris from the water.

The ClearRay Active Oxygen® System utilizes various technologies to achieve cleanliness. One of them is ozone, which aids in the grouping of smaller debris to form larger clusters that can be more easily captured in the filtration process.

MicroClean® Ultra Filtration

Get crystal-clear water with our distinctive MicroClean® Ultra Filtration system, which combines pleated and spun fibers to deliver an impressive 130 square feet of filtration.

SunScents™

SunScents™ Aromatherapy infuses the water with different fragrances that work to calm the mind, invigorate your mood, or boost your energy level.

Focus Relief® Jets

Experience the balance of relaxation and relief with our Focus Relief® Jets. This air-infused jet system delivers the perfect deep- or soft-tissue massage, while its Silent Air® injector infuses the water with your choice of scent.

Fluidix® Jets

Utilizing a unique blend of air and water, our patented Fluidix® Reflex™ Jets have been strategically positioned across six distinct massage seats. Experience the ultimate in customizable relief and tailored comfort as you unlock the full potential of an adjustable massage.

Aspen®

7'5"x9'2"x3'4" ft / 226x280x102 cm



Optima®

7'5"x7'5"x3'1" ft / 226x226x94 cm

Cameo®

7'5"x7'5"x3'1" ft / 226x226x94 cm



Vistamar™

7'x7'x3'1" ft / 213x213x94 cm



Altamar®

7'x7'x3'1" ft / 213x213x94 cm



Marin®

6'4"x7'7"x2'10" ft / 193x231x86 cm



Capri®

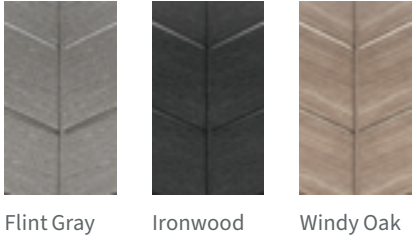
5'9"x6'10"x2'6.5" ft / 175x208x78 cm



Acrylic



Cabinetry



*See manual for more configurations. Specifications may vary by country, please check with your local retailer.



780™ Series

From patented Fluidix® Jets to premium cabinetry, you can check all the boxes with a 780™ Series spa—for memories that matter.

780

780™ Features

Experience
Patented Fluidix® Jets and
up to 6 Massage Varieties

Swedish Massage Seat

Accu-Pressure™ Therapy
Seat

Streamlined Digital
Control Panel with
Illumination

Clean® Water
Dynamic Flow™
Circulation Pump

Slipstream™ Skimmer

MicroClean® Filtration
System

ClearRay Active Oxygen®
System

ClearRay® On-Demand

Craftsmanship
Robust Synthetic Base

3-Layer RigidBond® Shell

SunStrong® Cover

SunSide® Cabinetry

Tool-Free Cabinetry

Integrated Exterior LED
Indicator Light

Exterior Lighting

Options

BLUEWAVE® stereo

SmartTub® system

EcoWrap® insulation

SunStrong® Extreme Cover



MicroClean® Filtration System

Get crystal-clear water with our distinctive MicroClean® Filtration system, which combines pleated and spun fibers to deliver an impressive 120 square feet of filtration.

SunSide™ Cabinetry

Available in a range of on-trend colors, the stylish, contemporary cabinetry is tool-free and UV-treated, for fade resistance and protection from sun damage.

Fluidix® Jets

Utilizing a unique blend of air and water, our patented Fluidix® Jets have been strategically positioned across six distinct massage seats. Experience the ultimate in customizable relief and tailored comfort as you unlock the full potential of adjustable massage.

*Clean is defined as the removal of microscopic (down to 3-micron level, varies by model) debris from the water.

The ClearRay Active Oxygen® System utilizes various technologies to achieve cleanliness. One of them is ozone, which aids in the grouping of smaller debris to form larger clusters that can be more easily captured in the filtration process.

Chelsee®

7'5"x7'5"x3'1.5" ft / 226x226x96 cm



Hamilton™

7'5"x7'5"x 3'1.5" ft / 226x226x96 cm



Bristol™

7'x7'x3'1.5" ft / 213x213x96 cm



Montclair™

6'3"x7'7"x2'10.5" ft / 191x231x88 cm

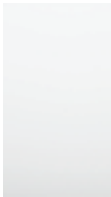


Dover™

5'9"x6'10"x2'7" ft / 175x208x79 cm



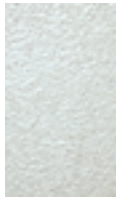
Acrylic



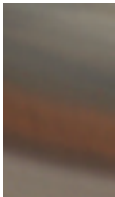
Porcelain



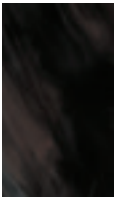
Platinum



Celestite



Monaco

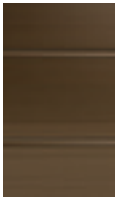


Midnight

Cabinetry



Brushed
Gray



Modern
Hardwood



Vintage
Oak

*See manual for more configurations. Specifications may vary by country, please check with your local retailer.



680™ Series

It's easy to love a 680™ Series spa, and not only for the fun and relaxing moments. You'll also appreciate its crystal-clear water, features like attractive cabinetry with exterior lighting, and superior durability.

680

680™ Features

- Experience Up to 6 Adjustable Massage Options
- Proprietary Jets
- Simplified Control Panel

- Clean* Water Slipstream™ Skimmer
- MicroClean® Mini Filtration System
- ClearRay® UV-C Technology

- Craftsmanship 3-Layer RigidBond® Shell
- SunStrong® Cover
- Tool-Free Cabinetry
- Exterior Lighting

- Options
- SunStrong® Extreme Cover
- SmartTub® System
- ClearRay Active Oxygen® System



MicroClean® Mini Filtration
Get crystal-clear water with our distinctive MicroClean® Mini Filtration system, which combines pleated and spun fibers to deliver 75 square feet of filtration.



Cabinetry
The stylish, tool-free cabinetry makes maintenance and servicing a breeze, helping to extend the lifespan of your 680™ Series spa.



SlipStream™ Skimmer
Extra wide weir gate floats with the water level to skim more buildup-producing debris than standard filtration systems.

*Clean is defined as the removal of microscopic (down to 3-micron level, varies by model) debris from the water.

The ClearRay Active Oxygen® System utilizes various technologies to achieve cleanliness. One of them is ozone, which aids in the grouping of smaller debris to form larger clusters that can be more easily captured in the filtration process.

McKinley®
7'5"x7'5"x3' ft / 226x226x92 cm



Edison®
7'x7'x3' ft / 213x213x92 cm



Ramona®
7'5"x7'5"x3' ft / 226x226x92 cm



Peyton™
7'x7'x3' ft / 213x213x92 cm



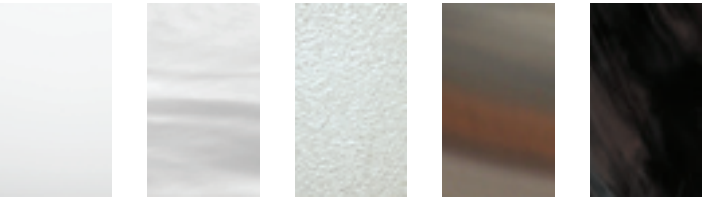
Prado®
6'8"x6'8"x2'9" ft / 203x203x84 cm



Alicia™
5'9"x6'8"x2'9" ft / 175x203x84 cm

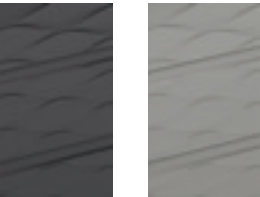


Acrylic



Porcelain Platinum Celestite Monaco Midnight

Cabinetry



Graphite Slate

*See manual for more configurations. Specifications may vary by country, please check with your local retailer.

FINDING The one

Take a closer look at each series,
compare sizes and seating options,
and fall in love with your perfect
Sundance® spa.

Your story begins here.



6+ Seats

Kingston™

980™ Series
7'8"x8'4"x2'10" ft
234x254x86 cm



Aspen®

880™ Series
7'5"x9'2"x3'4" ft
226x280x102 cm



6+ Seats

Chelsee®

780™ Series
7'5"x7'5"x3'1.5" ft
226x226x96 cm



McKinley®

680™ Series
7'5"x7'5"x3' ft
226x226x92 cm



Optima®

880™ Series
7'5"x7'5"x3'1" ft
226x226x94 cm



Vistamar™

880™ Series
7'x7'x3'1" ft
213x213x94 cm



Edison®

680™ Series
7'x7'x3' ft
213x213x92 cm



	Kingston™	Aspen®	Optima®	Vistamar™
Dry Weight	1,048 lbs (475 kg)	1,240 lbs (1,912 kg)	944 lbs (428 kg)	874 lbs (396 kg)
Total Filled Weight	5,310 lbs (2,409 kg)	5,456 lbs (2,474 kg)	4,906 lbs (2,225 kg)	3,626 lbs (1,645 kg)
Average Spa Volume	401 gal (1,518 liters)	505 gal (1,911 liters)	355 gal (1,344 liters)	330 gal (1,249 liters)
Total Jets	57+12 Air Injector Jets	66+6 Air Injector Jets	49+8 Air Injector Jets	41+10 Air Injector Jets
Massage Variety	8	10	9	9
Air Blower	Yes	Yes	Yes	Yes
Filtration System	MicroClean® Ultra	MicroClean® Ultra	MicroClean® Ultra	MicroClean® Ultra
Total Jet Pumps	3	3	2	2
Electrical	240 VAC @ 50A or 60A*	240 VAC @ 50A or 60A*	240 VAC @ 40A, 50A, or 60A*	240 VAC @ 40A, 50A, or 60A*

*The above specifications are for North America (60 Hz). Specifications may vary by country, please check with your local retailer.

	Chelsee®	McKinley®	Edison®
Dry Weight	873 lbs (396 kg)	787 lbs (357 kg)	737 lbs (334 kg)
Total Filled Weight	5,210 lbs (2,363 kg)	5,166 lbs (2,343 kg)	3,614 lbs (1,638 kg)
Average Spa Volume	400 gal (1,514 liters)	400 gal (1,514 liters)	345 gal (1,306 liters)
Total Jets	40	42	36
Massage Variety	6	6	6
Air Blower	—	—	—
Filtration System	MicroClean®	MicroClean® Mini	MicroClean® Mini
Total Jet Pumps	2	2	2
Electrical	240 VAC @ 40A, 50A, or 60A*	240 VAC @ 40A, 50A, or 60A*	240 VAC @ 40A, 50A, or 60A*

*The above specifications are for North America (60 Hz). Specifications may vary by country, please check with your local retailer.

5-6 Seats

Claremont®

980™ Series
7'8"x8'4"x2'10" ft
234x254x86 cm
Lounge



Cameo®

880™ Series
7'5"x7'5"x3'1" ft
226x226x94 cm
Lounge



5-6 Seats

Bristol™

780™ Series
7'x7'x3'1.5" ft
213x213x96 cm
Lounge



Ramona®

680™ Series
7'5"x7'5"x3' ft
226x226x92 cm
Lounge



Altamar®

880™ Series
7'x7'x3'1" ft
213x213x94 cm
Lounge



Hamilton™

780™ Series
7'5"x7'5"x3'1.5" ft
226x226x96 cm
Lounge



Peyton™

680™ Series
7'x7'x3' ft
213x213x92 cm
Lounge



	Claremont®	Cameo®	Altamar®	Hamilton™
Dry Weight	1,045 lbs (474 kg)	898 lbs (403 kg)	850 lbs (386 kg)	826 lbs (375 kg)
Total Filled Weight	5,348 lbs (2,426 kg)	3,808 lbs (1,727 kg)	3,394 lbs (1,539 kg)	4,996 lbs (2,266 kg)
Average Spa Volume	405 gal (1,533 liters)	350 gal (1,325 liters)	305 gal (1,155 liters)	393 gal (1,488 liters)
Total Jets	59+6 Air Injector Jets	53+6 Air Injector Jets	40+6 Air Injector Jets	41
Massage Variety	10	10	9	6
Air Blower	Yes	Yes	Yes	—
Filtration System	MicroClean® Ultra	MicroClean® Ultra	MicroClean® Ultra	MicroClean®
Total Jet Pumps	3	2	2	2
Electrical	240 VAC @ 50A or 60A*	240 VAC @ 40A, 50A, or 60A*	240 VAC @ 40A, 50A, or 60A*	240 VAC @ 40A, 50A, or 60A*

*The above specifications are for North America (60 Hz). Specifications may vary by country, please check with your local retailer.

	Bristol™	Ramona®	Peyton™
Dry Weight	745 lbs (338 kg)	791 lbs (359 kg)	736 lbs (334 kg)
Total Filled Weight	4,331 lbs (1,965 kg)	3,960 lbs (1,796 kg)	3,447 lbs (1,563 kg)
Average Spa Volume	350 gal (1,325 liters)	380 gal (1,438 liters)	325 gal (1,230 liters)
Total Jets	38	38	34
Massage Variety	6	6	6
Air Blower	—	—	—
Filtration System	MicroClean®	MicroClean® Mini	MicroClean® Mini
Total Jet Pumps	2	2	2
Electrical	240 VAC @ 40A, 50A, or 60A*	240 VAC @ 40A, 50A, or 60A*	240 VAC @ 40A, 50A, or 60A*

*The above specifications are for North America (60 Hz). Specifications may vary by country, please check with your local retailer.

4-5 Seats

Marin®

880™ Series
6'4"x7'7"x2'10" ft
193x231x86 cm
Lounge



Montclair™

780™ Series
6'3"x7'7"x2'10.5" ft
191x231x88 cm
Lounge



Prado®

680™ Series
6'8"x6'8"x2'9" ft
203x203x84 cm



2-3 Seats

Capri®

880™ Series
5'9"x6'10"x2'6.5" ft
175x208x78 cm
Lounge



Dover™

780™ Series
5'9"x6'10"x2'7" ft
175x208x79 cm



Alicia™

680™ Series
5'9"x6'8"x2'9" ft
175x203x84 cm



	Marin®	Montclair™	Prado®
Dry Weight	838 lbs (380 kg)	790 lbs (358 kg)	603 lbs (274 kg)
Total Filled Weight	3,298 lbs (1,496 kg)	4,251 lbs (1,928 kg)	2,897 lbs (1,314 kg)
Average Spa Volume	295 gal (1,117 liters)	310 gal (1,172 liters)	275 gal (1,041 liters)
Total Jets	45+4 Air Injector Jets	30	26
Massage Variety	9	6	5
Air Blower	Yes	—	—
Filtration System	MicroClean® Ultra	MicroClean®	MicroClean® Mini
Total Jet Pumps	2	2	1
Electrical	240 VAC @ 40A or 60A*	240 VAC @ 40A or 60A*	120 VAC @ 15A or 240 VAC @ 30A or 40A

*The above specifications are for North America (60 Hz). Specifications may vary by country, please check with your local retailer.

	Capri®	Dover™	Alicia™
Dry Weight	660 lbs (295 kg)	620 lbs (281 kg)	583 lbs (264 kg)
Total Filled Weight	2,286 lbs (1,033 kg)	3,247 lbs (1,473 kg)	2,334 lbs (1,059 kg)
Average Spa Volume	195 gal (738 liters)	230 gal (871 liters)	210 gal (795 liters)
Total Jets	36+4 Air Injector Jets	23	21
Massage Variety	7	5	3
Air Blower	Yes	—	—
Filtration System	MicroClean® Ultra	MicroClean®	MicroClean® Mini
Total Jet Pumps	1	1	1
Electrical	240 VAC @ 40A or 50A*	120 VAC @ 15A or 240 VAC @ 30A or 40A	120 VAC @ 15A or 240 VAC @ 30A or 40A

*The above specifications are for North America (60 Hz). Specifications may vary by country, please check with your local retailer.

From the responsive service of our expert dealers and after-sales care teams, to the assurance of a solid warranty, you'll love the Sundance experience. It's how we share the Sundance® hug.

MEET THE
Sundance®
family

PRESENCE

A global brand

You can find Sundance® Spas in more than 400 retail locations in over 65 countries. Over the past 45 years, thanks to an earned reputation for integrity, we have become a global brand presence.

We invite you to join the Sundance® Spas family.

- Algeria
- Australia
- Austria
- Belarus
- Belgium
- Bosnia/Herzegovina
- Bulgaria
- Canada
- Canary Islands
- China
- Colombia
- Costa Rica
- Croatia
- Cyprus
- Czech Republic
- Egypt
- Estonia
- France
- French Polynesia
- Germany
- Greece
- The Grenadines
- Hong Kong
- Hungary
- Iceland
- India
- Indonesia
- Ireland
- Israel
- Italy
- Japan
- Kenya
- Latvia
- Liechtenstein
- Lithuania
- Luxembourg
- Malaysia
- Maldives
- Malta
- Mexico
- Montenegro
- Morocco
- Netherlands
- Netherlands Antilles
- New Zealand
- Nigeria
- Norway
- Panama
- Philippines
- Poland
- Portugal
- Romania
- Singapore
- Slovakia
- Slovenia
- Spain
- South Korea
- Sri Lanka
- St. Vincent
- Sweden
- Switzerland
- Taiwan
- Thailand
- Turkey
- United Kingdom
- United States
- Uruguay
- Vietnam
- Virgin Islands



A world of Sundance® Spas

CARING Community partnerships

Through our Good Cause Spas® program, we're sharing those feel-good moments to help families reconnect, bodies recover, and spirits revive.

We partner with organizations to help first responders, military personnel, and neighborhood champions access the healing powers of hydrotherapy.

As of 2023, we've donated \$134,000 and 90 Sundance® Spas to numerous worthy causes.



Sundance® Spas donates a spa to WISH for OUR HEROES for every 100 Sundance® spas sold at each participating dealer location in a single calendar year.

Please join us in celebrating the dealers that helped contribute to this worthy cause.

A-1 Pools
Accent
AJ Spas
All Season Spas
All Seasons Pools & Spas
Allstate Home Leisure
Aqua Paradise
Aqua Quip
Aquarius
Arctic Home Living
Atlanta Hot Tub Center
Backyards in Style
Backyards of America
Big Johns
Carefree Spas of Indianapolis
Champagne Spas
Desert Oasis
Emerald Swimming Pools of Oregon
Great Bay Spa & Sauna
Home Oasis
Hot Tub Factory
Hydro-Spa Factory Outlet
Imagine Backyard
Inside Out Home Recreation
Jacuzzi of Hurricane
Le Dipping Parlor
Mastercraft Spas
North Idaho Spas
New England Spas
Omaha Hot Tub Company
Pacific Spas & Sauna
Paradise Valley
Performance Pool & Spa
Pool City
Red Rock Spas
Rejuvenate Pools & Spas
Royal Pools & Spas
Spa Crafters
Spa Land
Spa Palace
Sundance Spas of Anaheim
Sundance Spas of New Hampshire
Sundance Spas Twin Ports
Superior Spa & Hearth
Take A Break Spas & Billiards
The Great Escape
The Spa & Sauna Co.
Vienna Hot Tubs



SERVICE

Retail perfected



We pride ourselves on handpicking the perfect retail partners. Aqua Quip, our 2022 Dealer of the Year, showcases unwavering commitment through their stunning showrooms in Seattle. This dealer consistently upholds this dedication by providing outstanding customer service and support for every Sundance® spa they deliver.





Love, love, love my Sundance spa
and won't ever buy anything else.

Manpreet from Beaumont

Just purchased my third
Sundance Spa and am extremely
happy with it as well as the
exceptional service from the dealer.

Brad from Edmonton

*Great massage and easy to use [as] I
am a new hot tub owner. I have severe
back pain with numbness. After 20 min
a day, I can go without pain for 1-2 hrs.*

Teri from Colorado

Live the Sundance® life

We narrowed down our spa search to Sundance
and another brand. We chose Sundance due to their customer
service history, the knowledge, friendliness, and honest
dealer at Sunspa Calgary.

Carrie from Calgary

*The quality of my Sundance
spa is top notch and the service
we received from Terry the owner
of the spa store was awesome.*

Olga from Brighton

Our Sundance spa is the best
purchase we've ever made...
should have bought this years ago.
It's our family happy place.

Laura from Sacramento

Sunlight dances with water
The mood lifts like steam
Conversations flow easily
Memories bubble up
Stress floats away

There's a perfect spot for everyone.



Sundance.com
14525 Monte Vista Avenue
Chino, California 91710

©2024 Sundance Spas, Inc. All rights reserved. Sundance® is a registered trademark of Sundance Spas, Inc. All other brands, product names, company names, trade names, and trademarks used are the property of their respective owners. Sundance may add to, change, or remove any part of these materials at any time, without notice. Reproduction in whole or in part without written permission is prohibited. International products may be configured differently to meet local electrical requirements. Dimensions are approximate.

Part No: 6890-044A
02/24

Sundance® Spas